

Kulswamini Kasturi

Project Broucher



2013

"We Build Relationships"



Company Profile

“Kulswamini (Housing) landmarks Private Limited” is started by “Gawade Group” and it is also parent organization of “Charbhuj Developers” in Pune and all across the India. Mr. Shankar Gawade (Most popular personality in the real estate sector) is Director of this group. By profession Mr. Shankar Gawade is civil Engineer and now growing entrepreneur.

Director’s Massage

“I have seen a lack of commitment in this existing competitive market in this new era, where our company always focuses on commitment which is given to our customer quality construction. I have always tried to encourage our employees to aim at fulfilling the customer satisfaction so that we can achieve high business growth by providing huge proportion of customer satisfaction. I would like to thank all those customers, who have kept faith on us; all those employees, who have worked very hard for our quality products. I would like to say very proudly, our company will be India’s no. 1 because our policies, quality of product and ethics are very strong.”

- Mr. Shankar Gawade (Director Gawade Group)

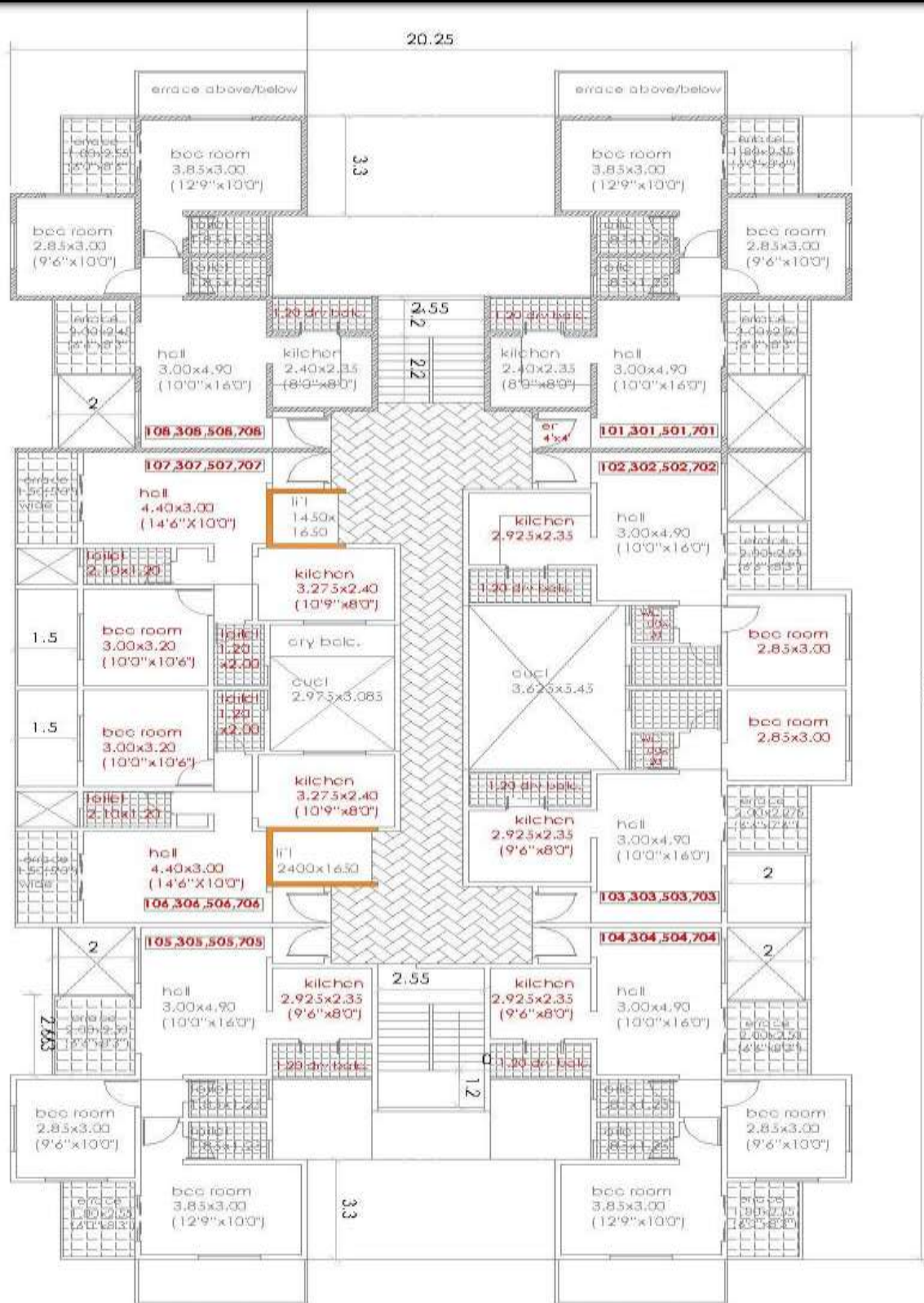
Why Kulswamini Kasturi?

1. Pay EMI after Possession is available
2. Spacious & Luxurious residential project
3. Ground + 7 Floor Structure
4. Reserved cover parking
5. And much more

Project Theme

When we decided to build the “Kulswamini Kasturi”, we struck the perfect balance between privacy, luxury and independence of a home and then cost – effective maintenance and security of an apartment and an apt name to go with its: Beautiful environment.

“Opportunity to purchase a Lifestyle Investment at Chakan, Pune”

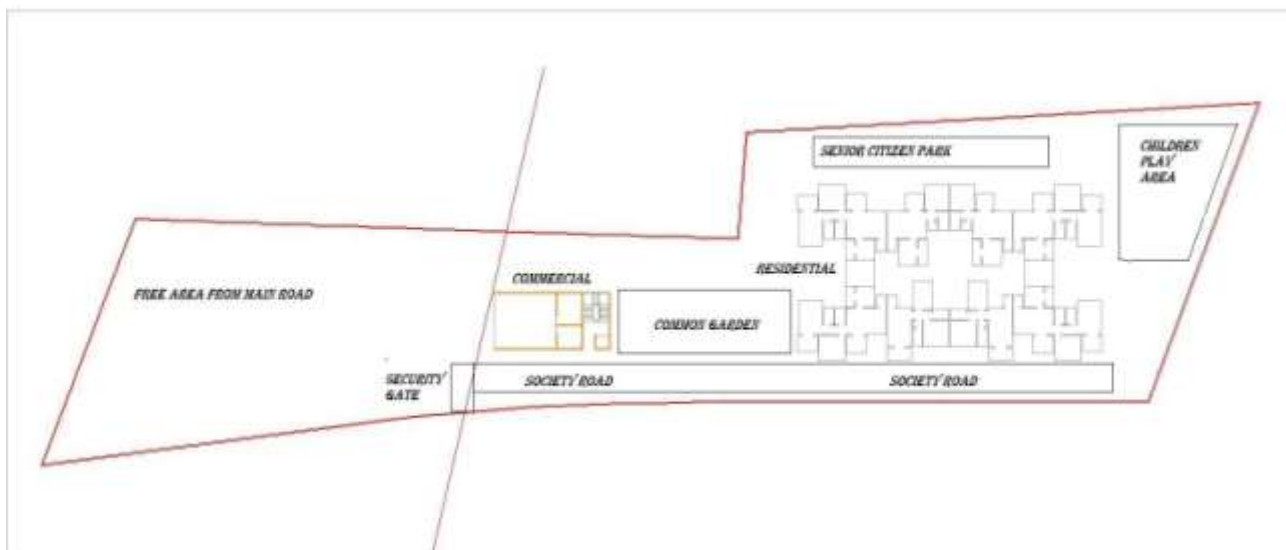


FIRST, THIRD, FIFTH AND SEVENTH FLOOR PLAN

“Opportunity to purchase a Lifestyle Investment at Chakan, Pune”



“Opportunity to purchase a Lifestyle Investment at Chakan, Pune”



Project Amenities & Specifications

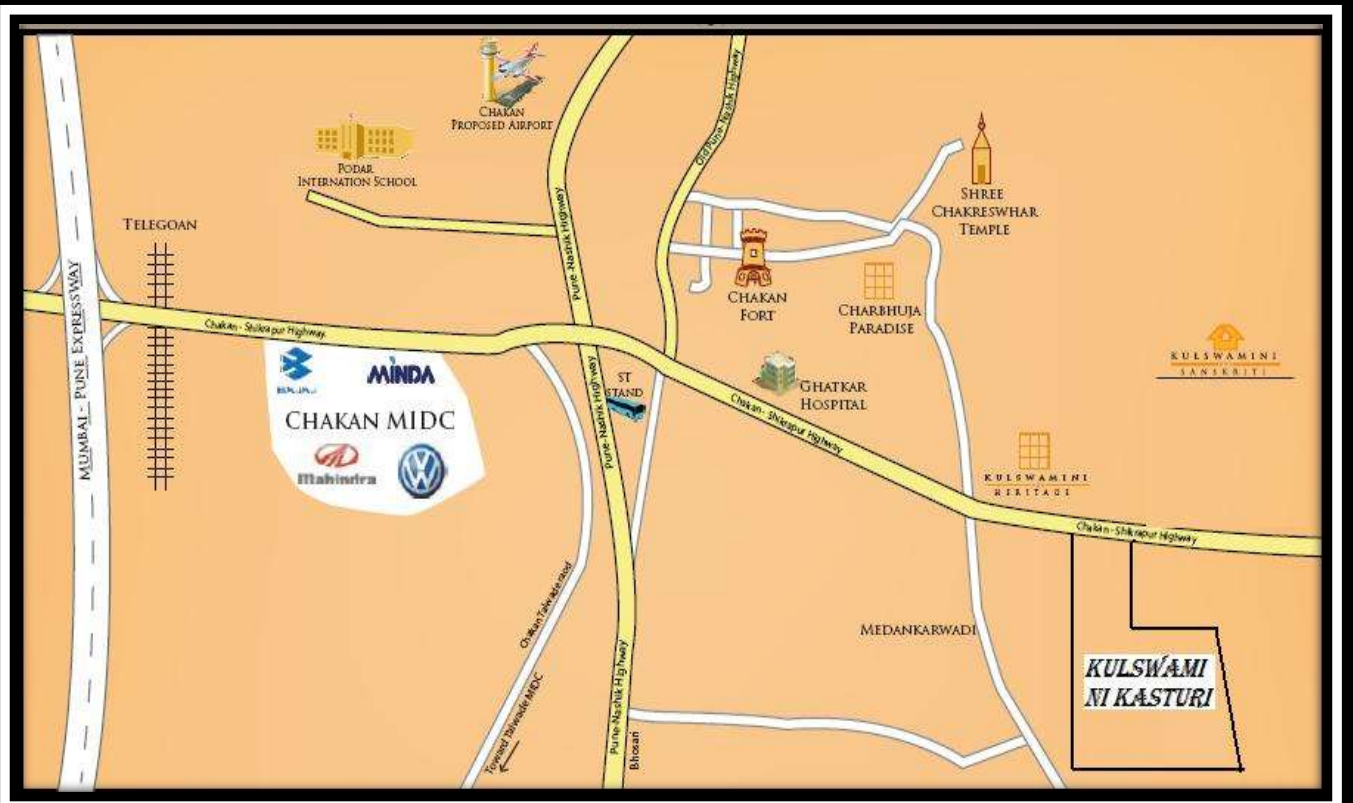
Amenities

1. Common Garden
2. Children Play Area
3. Two (Passenger + Service) lifts with power back up
4. Security Gate with cabin
5. Senior Citizen Park
6. Fire Fighting
7. Reserved Cover Parking
8. Rain Water Harvesting

Specifications

1. Structure - Earthquake resistant
2. Masonry - High quality bricks
3. Plaster - Double coat sand face plaster
4. Flooring - 24"x 24" Vitrified tiles
5. Kitchen - Granite top kitchen
6. Plumbing - ISI make concealed plumbing
7. Electrification - ISI make concealed Electrical wiring
8. Doors - Decorative and laminated main entrance door
9. Windows - Three Track powder coated sliding
10. TV & Tel- Provision of TV and Telephone point
11. Roads - Cement/Paver blocks

“Opportunity to purchase a Lifestyle Investment at Chakan, Pune”



Contact us : Site Office : Gat No. 1244 & 1246, Chakan Shikrapur Road, Medankarwadi, Chakan, Pune.
Corporate Office : Sr. No. 282, Plot No. 16, Tanaji Nagar, Chinchwad, Pune.
Tel : +91 20 2761 0081 Fax : +91 20 2761 0082 | Cell : +91 88888 49697 |
Website : www.gawadegroup.com | www.kulswaminilandmarks.com | Email ID : sales@gawadegroup.com |